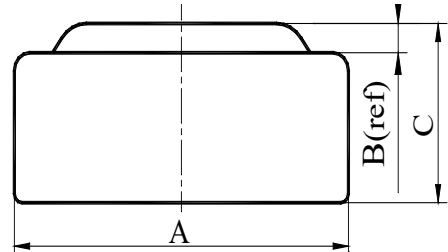


SHENZHEN KUNTENG CO., LTD

TECHNICAL SPECIFICATION

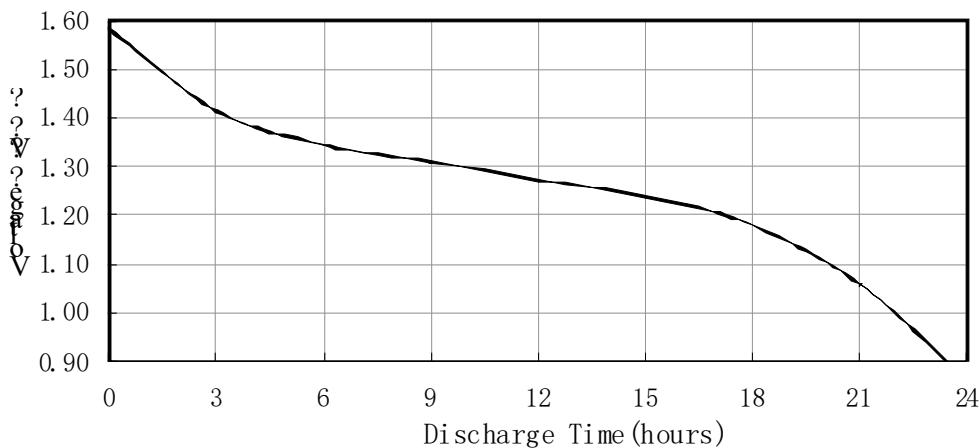
LR736

Chemical System : Alkaline manganese button batteries
Model No. : LR736 (LR41 AG3 192)
Nominal Dimensions : $\Phi 7.90 \times 3.60\text{mm}$
Nominal Voltage : 1.50V
Average Weight : 0.61g
Applications : Watch, Calculator,
Electronic toy, etc.
Shelf Life : Not less than 90% of the
service capacity, following
1st year storage at 20°C.
Loading : 1000 Ω (20°C)
Cut Off Voltage : 0.90V
Capacity : 31mAh



Dimensions	Unit: mm
A	7.75----7.90
B	0.40(ref)
C	3.30----3.60

Typical Discharge Characteristics at 20°C



Address: No.1 Factory, Oriental Hi-tech Park, Qiaoxiang Rd, Shenzhen, China.
Tel :86-755-26756070 Fax : 86-755-26755329 Postcode: 518053

E-mail: info@tinko.com.cn Website: www.tinko.com.cn